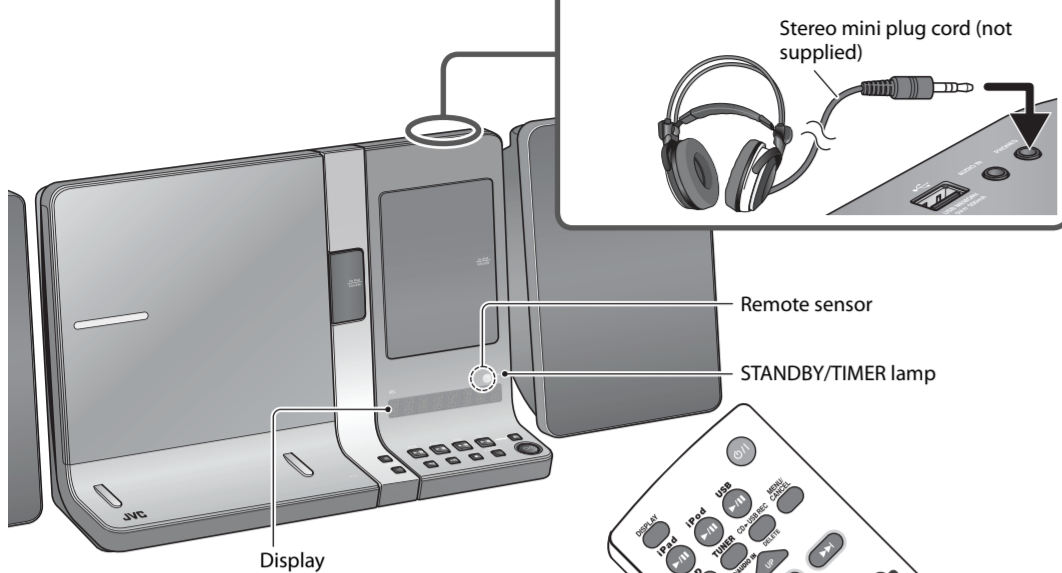


Basic playback operations

Initial setting:
Set the clock before using the System (see "Setting the clock" on page 1).



Using the headphones
• Be sure to turn down the volume before connecting or putting on the headphones.

DO NOT turn off the System with the volume set to an extremely high level; otherwise, the sudden blast of sound may damage your hearing, speakers, and headphones when you turn on the System or start playback.

Turning on/off the power
• The STANDBY/TIMER lamp lights in red while the System is on standby.

Selecting the source
For UX-VJ5: iPad, iPod, USB, CD, TUNER, PC/AUDIO IN
For UX-VJ3: iPad, iPod, USB, PC, AUDIO IN, TUNER
For USA and Canadian models: TUNER

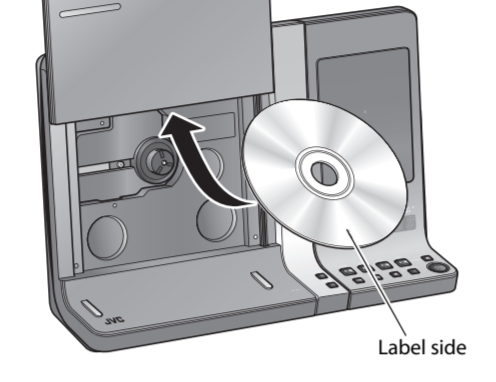
Adjusting the volume
• To mute the volume in a moment, press **MUTING**.
– "MUTING" flashes on the display.
– To restore the volume, press **MUTING** again or adjust the volume level.

Disc/USB device

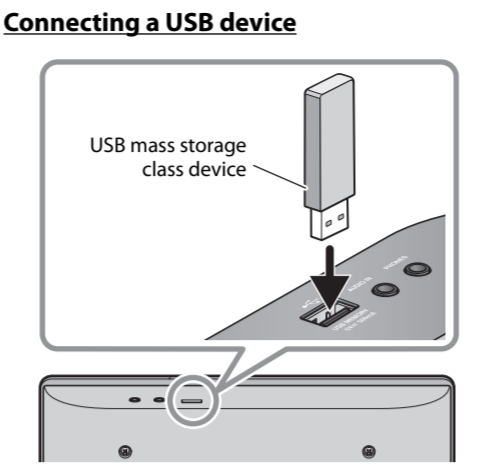
• Disc playback is available only for UX-VJ5.
• USB playback is not available for UX-VJ3 USA and Canadian models.

Inserting a disc
Before opening the slide door, disconnect the iPad.
• If you try to open the slide door with the iPad connected, "NO OPE" appears on the display and the door does not open.

On the main unit:
1 Open the slide door.
2 Insert a disc.
3 Close the slide door.



Prohibiting disc ejection
You can lock the slide door.
While the System is on standby...
On the main unit:
[LOCKED] + [UNLOCKED] → [UNLOCKED] (Canceled)



Notes on USB mass storage class device connection
• Connect a USB mass storage class device when the System is turned off to prevent malfunction.
• Do not use a USB hub.
• When connecting with a USB cable, use a USB 2.0 cable whose length is less than 1 m.
• The USB mass storage class device is charged through the USB MEMORY terminal when "CD" or "USB" is selected as the source.
• You cannot connect a computer to the USB MEMORY terminal of the System.
• Electrostatic shock at connecting a USB mass storage class device may cause abnormal playback of the device.
• In this case, disconnect the USB mass storage class device then reset the System and the USB mass storage class device.
• While playing back or recording a file onto a USB mass storage class device, do not disconnect the device. Doing so may cause malfunction on both the System and the device.
• JVC bears no responsibility for any loss of data in USB mass storage class device while using this System.

Playback operations

To play back/pause
For discs: [CD] [Play/Pause]
For USB devices: [USB] [Play/Pause]

To open/close the slide door
(On the main unit)
[Slide Door Icon]

To select a track
[Previous] [Next]

Memorizing the stopped track (Resume Play)
By activating Resume play, when you restart playback after playback has been stopped, it starts from the beginning of the stored track.
RESUME [RESM ON (Activated)] ↔ [RESM OFF (Canceled)]

When Resume Play is activated, "RESUME" appears on the display while playback is stopped.

Repeat Play
TUNER MODE [REPEAT] → RPT OFF ↔ RPT 1
RPT ALL ← RPT GR*2
RPT1 Repeats the current track.
RPT GR*2 Repeats the current group.
RPT ALL Repeats all contents or programmed tracks.
RPT OFF Cancels repeat play.

Random Play
While playback is stopped...
1 [RANDOM] [RANDOM (Activated)] ↔ [NORMAL (Canceled)]
2 Press [CD] [Play/Pause] or [USB] [Play/Pause] to start random play.

To fast-reverse/fast-forward a track
[Fast-Rewind] [Fast-Forward]

• Each time you press the button, the search speed changes as follows: x2 → x4 → x8 → x20.
• To stop fast-reversing/fast-forwarding, press [CD] [Play/Pause] or [USB] [Play/Pause].

To select a group
[UP] [DOWN]

To stop playback
[Stop]

Program Play
While playback is stopped...
1 Display the program entry screen.
[PROGRAM] [PROGRAM] ↔ [NORMAL (Program entry mode)]
2 Select a track number (up to 32 tracks).
[Fast-Rewind] [Fast-Forward] [SET]

• To cancel a current program entry, press **MENU/CANCEL**.
• To cancel all program entries, press and hold **MENU/CANCEL**.
• If you try to program a 33rd track, "PGM FULL" appears and the track cannot be stored.
3 Press [CD] [Play/Pause] or [USB] [Play/Pause] to start program play.
• To check the programmed contents, press **UP** or **DOWN** repeatedly while playback is stopped.
• To exit Program Play, press **PROGRAM** while playback is stopped. "NORMAL" appears on the display. – The stored program is erased.

*1 These playback modes are canceled in the following cases:
– When the System is turned off.
– When the source is changed.
– When the slide door is open with "CD" selected as the source.
– When a USB mass storage class device is disconnected with "USB" selected as the source.
*2 Appears only for MP3/WMA files.

Recording operations (only for UX-VJ5)

Before you start recording
• It should be noted that it may be unlawful to re-record pre-recorded tapes, records, or discs without the consent of the owner of copyright for the sound or video recording, broadcast or cable program and for any literary, dramatic, musical, or artistic work embodied therein. The use of the files recorded on a USB device with this System, except for personal use, is prohibited. Transferring or selling the files you recorded violates the copyright law and may subject you to civil and criminal penalties for copyright infringement.

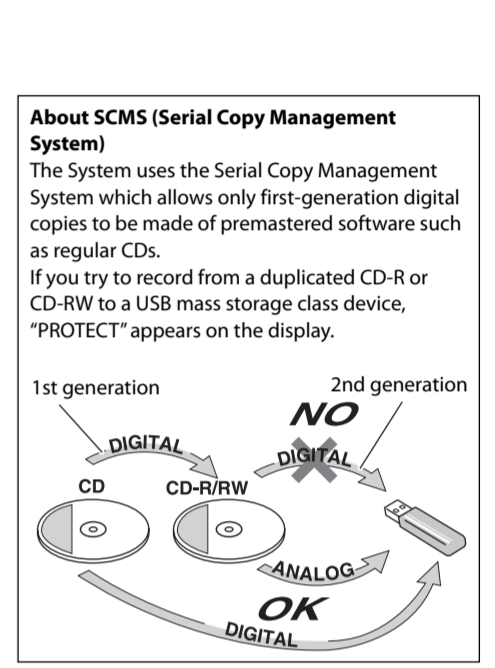
• Volume and sound adjustments do not affect recordings.
• Random Play and Repeat Play are canceled during recording.
• Tracks which are recorded onto a USB mass storage class device will be converted into MP3 format (at a bit rate of 192 kbps).
• Recording does not start while "READING" is shown on the display.
• You cannot record tracks to the root directory of the USB mass storage class device.

Recording from a disc
You can record tracks from a CD to a USB mass storage class device.
Before recording, connect a recordable USB mass storage class device to the USB MEMORY terminal.
While the playback of the disc is stopped...
1 Select the first track to record.
2 [CD-USB REC] [DELETE]
The REC indicator flashes.
3 Start recording.
[SET]

• Do not move the System while recording. It may damage the recorded tracks.
• The System automatically creates the new group.
• When playback ends, recording automatically stops.
• To stop recording manually, press [STOP].
• To record a single track, press [CD] [USB REC] during playback of the track or while it is paused.
• If "NO REC" appears on the display when you try to record a track, the System cannot record that track.

Deleting files from a USB device
You can delete files on the connected USB mass storage class device.
While playing a file on the USB mass storage class device...
1 Select the track to delete.
2 [CD-USB REC] [DELETE]
"PUSH SET" flashes on the display.
• To cancel deleting the file, press [STOP] or **MENU/CANCEL**.
3 Start deleting.
[SET]
"DELETE" appears on the display and the REC indicator lights up while deleting the file.
• When deleting is complete, "FINISH" appears on the display.

About SCMS (Serial Copy Management System)
The System uses the Serial Copy Management System which allows only first-generation digital copies to be made of pre-mastered software such as regular CDs.
If you try to record from a duplicated CD-R or CD-RW to a USB mass storage class device, "PROTECT" appears on the display.



iPod/iPhone/iPad

Connecting iPod/iPhone

To pop out the support arm
• Press the support arm until it fits to the iPod/iPhone.

1 Reveal the iPod/iPhone dock.
• To hide the dock, press and rotate it back. – Make sure that the support arm is fully pressed in.

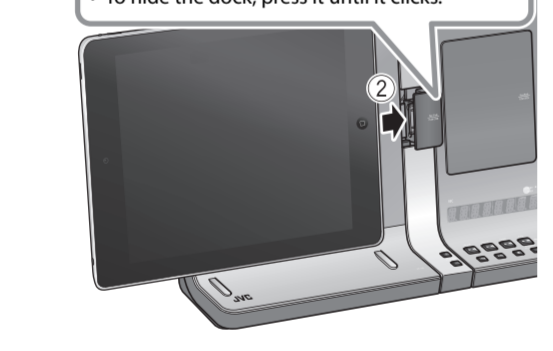
To connect iPod/iPhone horizontally
Rotate the iPod/iPhone dock after connection.

• When you connect iPod/iPhone/iPad to the dock, "CONNECT" appears on the display first, followed by "READING" and then "SUCCESS". You can play iPod/iPhone/iPad when "SUCCESS" appears.
– If iPod/iPhone/iPad is not connected properly, "AUTH ERR" appears. Connect the iPod/iPhone/iPad again.

Notes on iPod/iPhone/iPad connection
• Be sure to connect or disconnect the iPod/iPhone/iPad only when the System is on standby or turned off.
• Be sure to reduce the volume on the System to the minimum level before connecting iPod/iPhone/iPad. Adjust the volume after starting playback.
• Do not carry the System with iPod/iPhone/iPad connected. It might cause damage to the dock or you might drop the iPod/iPhone/iPad.

Connecting iPad

1 Reveal the iPad dock.
• To hide the dock, press it until it clicks.



Setting the video output of the iPod/iPhone/iPad
Before playing a video, select the appropriate video output to view a video/picture on the monitor or the iPod/iPhone/iPad.

While the System is on standby...
On the main unit:
1 Display the video output setting screen.
[Play/Pause] (Hold)
2 Select the video output.
[Play/Pause] VOUT ON ↔ VOUT OFF

• Do not touch or hit the iPod/iPhone/iPad terminal pins or connector pins in the dock for iPod/iPhone/iPad directly. Doing so might cause damage to the connector pins.
• When the iPod/iPhone/iPad is not in use, it is recommended to disconnect the iPod/iPhone/iPad, then close the dock cover to protect the dock.
• You may not be able to connect an iPod/iPhone/iPad with a case depending on the product.

Playback operations

To play back/pause
For iPod/iPhone: [Play/Pause]
For iPad: [Play/Pause]

• You can also pause playback by pressing [Mute].

To select a track
[Previous] [Next]

To fast-reverse/fast-forward a track
[Fast-Rewind] [Fast-Forward] (Hold)

To select random playback
[RANDOM]

"SHUFFLE" appears on the display.
• If you hold **RANDOM** when both iPod/iPhone and iPad are connected to the System, "DUAL SFL" appears on the display and Random Play applies to both iPod/iPhone and iPad devices.

Menu operations

To display the menu/to go back to the previous menu
[MENU/CANCEL] [MENU]
For UX-VJ3 USA and Canadian models: [MENU]

To select an item on the menu
[UP] [DOWN] [SET]

Notes:
• Operate iPod touch, iPhone or iPad itself in the following cases:
– When operating the home button.
– When selecting application icons on the home screen.
– When dragging the slider.
• Sound distortion may occur when playing back audio sources with high recording levels. If distortion occurs, it is recommended to turn off the equalizer of iPod/iPhone/iPad. For information on operating iPod/iPhone/iPad, see the instruction manual for iPod/iPhone/iPad.

To play back repeatedly

TUNER MODE [REPEAT]
"REPEAT" appears on the display.
To put iPod/iPhone/iPad in sleep mode
For iPod/iPhone: [Play/Pause] (Hold)
For iPad: [Play/Pause] (Hold)

NOTE:
Headphones cannot be used for playing back iPod/iPhone/iPad. No sound is heard if headphones are connected.
• When the headphones are connected, "HP MUTE" appears on the display.

FM/AM radio

Searching for stations

1 Select the band ("FM" or "AM").
For UX-VJ5: [TUNER] [FM/AM]
For UX-VJ3: [TUNER] [FM/AM]
For UX-VJ3 USA and Canadian models: [TUNER]

2 Search for a station.
[Fast-Rewind] [Fast-Forward] (Hold)

Selecting AM interval spacing (Asia only)
Before operating the tuner, select the appropriate AM tuner interval spacing (9 kHz or 10 kHz) used in your residential area.
While the System is on standby...
On the main unit:
To select 9 kHz: [Play/Pause] + [Fast-Rewind]
To select 10 kHz: [Play/Pause] + [Fast-Forward]

Improving the reception

If the FM reception is poor
TUNER MODE [REPEAT] [FM MONO] ↔ [FM AUTO (Monaural mode)] (Canceled)

• When the monaural mode is activated, the reception is improved. However, the stereo effect is lost.
• To restore the stereo effect, press **TUNER MODE** again to select "FM AUTO".

If beat noise is heard while listening to AM station
Select the appropriate AM beat-cut mode.
TUNER MODE [REPEAT] [BEATCUT1] → [BEATCUT2] [BEATCUT4] ← [BEATCUT3]

• If you change to another station, this setting is automatically canceled.

Presetting stations

You can preset up to 30 FM stations and 15 AM stations.
While listening to a target station...
1 Display the preset channel setting screen.
[SET]
2 Select a preset number, then store the station.
[UP] [DOWN] [SET]

Tuning in to a preset station
[UP] [DOWN]

Receiving FM stations with Radio Data System (Europe only)
Radio Data System allows FM stations to send an additional signal along with their regular program signals.
• If you want to know more about Radio Data System, visit <<http://www.rds.org.uk>>.

To display the Radio Data System information
[DISPLAY] [PS] → [PTY] → [RT]
Frequency ← Clock

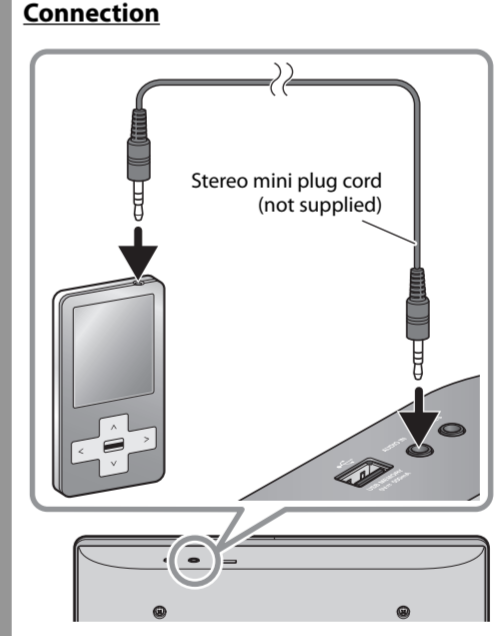
PS Commonly known station names.
PTY Types of broadcast programs.
RT Text messages the station sends.

• "NO PS," "NO PTY," or "NO RT" appears on the display if no relevant signals are sent by a station.
• When a Radio Data System signal is not received, the frequency is displayed.

PTY search (Europe only)
You can search for a program from the preset stations by specifying PTY code.
While listening to a station...
1 [PTY SEARCH]
[Stop]
2 Select a PTY code, then start searching.
[UP] [DOWN] [PTYPRESEARCH] [SET]
"SEARCH" flashes on the display. When the System finds the one you have selected, that station is tuned in.
• To stop searching, press **MENU/CANCEL**.
• If no program is found, "NO FOUND" appears.

External component

Audio player



Digital audio sources from a computer

• For connection, see "To connect a computer" on page 1.

Playback operation

1 Select "AUDIO IN" as the source.
For UX-VJ5: [TUNER] [PC/AUDIO IN] (Press repeatedly)
For UX-VJ3: [AUDIO IN]

2 Start playback of the external device.

Adjusting the audio input level
You can change the audio input level through the AUDIO IN jack.
[SET] [LEVEL1] → [LEVEL2] [LEVEL3]
• The maximum audio input level is "LEVEL3."

Playback operation

1 Select "PC" as the source.
For UX-VJ5: [TUNER] [PC/AUDIO IN] (Press repeatedly)
For UX-VJ3: [PC]

2 Start playback on the connected computer.

• Microsoft and Windows Media are either registered trademarks or trademarks of Microsoft Corporation in the United States and/or other countries.
• "Made for iPod," "Made for iPhone," and "Made for iPad" mean that an electronic accessory has been designed to connect specifically to iPod, iPhone, or iPad, respectively, and has been certified by the developer to meet Apple performance standards. Apple is not responsible for the operation of this device or its compliance with safety and regulatory standards. Please note that the use of this accessory with iPod, iPhone, or iPad may affect wireless performance.
• iPhone, iPod, iPod classic, iPod nano, and iPod touch are trademarks of Apple Inc., registered in the U.S. and other countries. iPad is a trademark of Apple Inc.